



welcome to

# Thorpebury in the Limes

Barkby • Leicester



A modern development of  
3 bedroom new homes  
for shared ownership sale

welcome to your new home

# Thorpebury in the Limes, Barkby

Barkbythorpe Road, Leicester, LE7

3 Bedroom Terrace Houses | **Plots 184, 185 & 186**

platform   
**home**  
O W N E R S H I P



## Kitchen

Contemporary kitchen  
Oven, hob and extractor  
Vinyl flooring  
Space for washing machine and  
fridge/freezer

## Bathroom

Three piece white suite  
Shower over bath with screen  
Complimentary wall tiling  
Vinyl flooring

## General

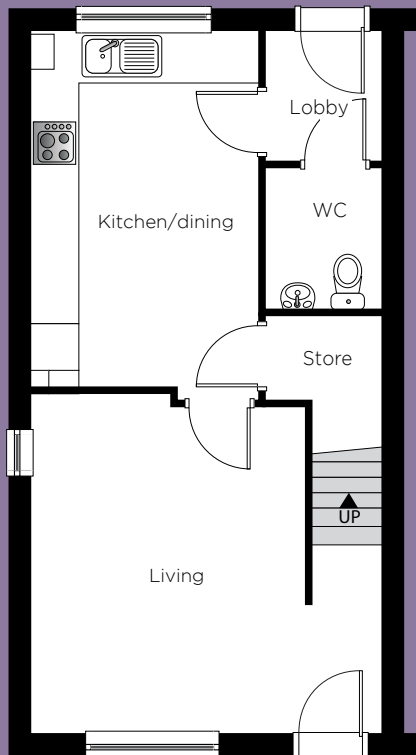
Located in Charnwood Borough  
Council  
New village community  
Close proximity to local amenities  
Excellent transport links to Leicester  
& Loughborough  
Off road parking  
10 year build warranty

CGI shown is for illustrations purposes only.

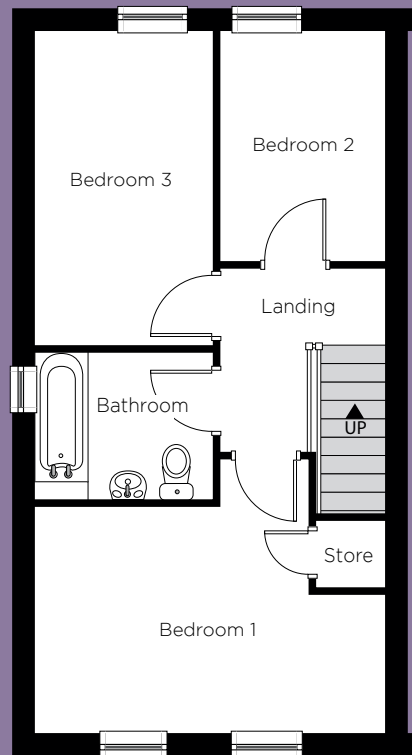
# Thorpebury in the Limes, Barkby

Barkbythorpe Road, Leicester, LE7

3 Bedroom Terrace Houses | **Plots 184, 185 & 186**



**Ground Floor**



**First Floor**

**Please note:**  
Some plots will be the opposite floor layout to shown.

## Ground Floor

Kitchen/ dining	4.71m 15' 6"	x	3.03m 9' 11"	(max)
Living	4.65m 15' 3"	x	4.47m 14' 8"	(max)

## First Floor

Bed 1	4.65m 15' 3"	x	3.01m 9' 11"	(max)
Bed 2	3.07m 10' 1"	x	2.22m 7' 3"	(max)
Bed 3	4.19m 13' 9"	x	2.37m 7' 9"	(max)
Bathroom	2.27m 7' 9"	x	1.92m 6' 4"	(max)

## Total Floor Area:

86.29m<sup>2</sup>/928.77 sq.ft

Kitchen layouts are indicative only. Please consult with Platform staff for specific plans, room dimensions and kitchen layouts. The information is for guidance only and is not to be relied on as statements or representations of fact and they do not make or give representation or warrant whatsoever and do not form part of any contract. All room measurements shown in metric first followed by imperial underneath.

# Thorpebury in the Limes, Barkby

Barkbythorpe Road, Leicester, LE7

Site plan



## Development

 3 Bedroom Terrace Houses  
Plots 184, 185 & 186

Part of the  platform  
housing group

For further details please contact our sales team on: **0333 200 7304** or email: [sales@platformhg.com](mailto:sales@platformhg.com)

**Contact Us:**  [www.platformhomeownership.com](http://www.platformhomeownership.com) |  [facebook.com/PlatformHomeOwnership](https://facebook.com/PlatformHomeOwnership)

 [twitter.com/PlatformNewHome](https://twitter.com/PlatformNewHome) |  [instagram.com/platformhomeownership](https://instagram.com/platformhomeownership)

# Thorpebury in the Limes, Barkby

Barkbythorpe Road, Leicester, LE7

House prices for all plots available



## Houses available

Plot	House Type	Postal Address	Handover	100% Price	35% Share Value	Monthly Rent	Service Charge
184	3 Bedroom End-Terrace House	20 Pear Tree Close, Barkby, Leicester LE7 3AS .	November 2024				
185	3 Bedroom Mid-Terrace House	22 Pear Tree Close, Barkby, Leicester LE7 3AS.	November 2024				
186	3 Bedroom End-Terrace House	24 Pear Tree Close, Barkby, Leicester LE7 3AS.	November 2024				

For further details please contact our sales team on: **0333 200 7304** or email: [sales@platformhg.com](mailto:sales@platformhg.com)

**Contact Us:**  [www.platformhomeownership.com](http://www.platformhomeownership.com) |  [facebook.com/PlatformHomeOwnership](https://facebook.com/PlatformHomeOwnership)

 [twitter.com/PlatformNewHome](https://twitter.com/PlatformNewHome) |  [instagram.com/platformhomeownership](https://instagram.com/platformhomeownership)

For details contact our sales team  
on **0333 200 7304**  
or email: **sales@platformhg.com**

**Contact Us:**



[www.platformhomeownership.com](http://www.platformhomeownership.com)



[facebook.com/PlatformHomeOwnership](https://facebook.com/PlatformHomeOwnership)



[twitter.com/PlatformNewHome](https://twitter.com/PlatformNewHome)



[instagram.com/platformhomeownership](https://instagram.com/platformhomeownership)

Scheme administered by Platform Housing Group  
1700 Solihull Parkway, Birmingham Business Park, Solihull, B37 7YD.

Part of the **platform**  
housing group