

SHIREBROOK

DERBYSHIRE

platform 
home
OWNERSHIP



PLATFORM HOME OWNERSHIP

At Platform Home Ownership, we're passionate about building quality homes for our customers and creating communities that homeowners can be proud of. It's our mission to build a better future for the UK - investing in affordable homes to ensure accessible routes to homeownership for everyone.

Building A Better Future Through New Homes

INTRODUCTION

P. 04

LOCAL AREA

P. 06

CONNECTIVITY

P. 07

SHARED OWNERSHIP

P. 08

THE DEVELOPMENT

P. 09

AVAILABLE HOMES

P. 10

GET IN TOUCH



**WELCOME TO
SHIREBROOK, A
STUNNING NEW
COUNTRYSIDE
DESTINATION.**

THE WORLD AROUND YOU

Shirebrook is an increasingly popular place for homebuyers. Located just outside of Mansfield, it's home to all of the amenities you could imagine - schools, leisure facilities and local shops to pubs, supermarkets and entertainment - all within easy reach. With a friendly atmosphere, Shirebrook is ideal for families seeking a relaxed way of life in a beautiful setting.



SHIREBROOK IS PERFECTLY CONNECTED IN EVERY DIRECTION MAKING IT A HOME BUYERS DREAM

5 MILES
MANSFIELD

23 MILES
SHEFFIELD

26 MILES
NOTTINGHAM

27 MILES
DERBY

LOCAL AMENITIES

SUPERMARKET	2 MINUTES (CAR)	0.3 MILES
DOCTORS	1 MINUTES (CAR)	0.2 MILES
GYM	4 MINUTES (CAR)	1.1 MILES
LEISURE CENTRE	2 MINUTES (CAR)	0.3 MILES

PLACES OF INTEREST

SHIREBROOK DESIGNER OUTLET	3 MINUTES (CAR)	1.0 MILES
PLAYPARK	2 MINUTES (CAR)	0.8 MILES
SHERWOOD FOREST	22 MINUTES (CAR)	7.4 MILES
RUFFORD PARK GOLF & COUNTRY CLUB	23 MINUTES (CAR)	12.6 MILES

CONNECTIVITY

SHIREBROOK STATION	3 MINUTES (CAR)	0.8 MILES
A60	6 MINUTES (CAR)	2.8 MILES
MANSFIELD STATION	13 MINUTES (CAR)	6.0 MILES
M1	11 MINUTES (CAR)	6.2 MILES

EDUCATION

SHIREBROOK ACADEMY	4 MINUTES (CAR)	1.6 MILES
PARK INFANT & JUNIOR SCHOOL	3 MINUTES (CAR)	0.7 MILES
ST JOSEPHS CATHOLIC PRIMARY	3 MINUTES (CAR)	0.9 MILES
STUBBIN WOOD SCHOOL & NURSERY	4 MINUTES (CAR)	1.3 MILES

Travel times are all shown in minutes and are representative of driving time. All times and distances are taken from [google.com/maps](https://www.google.com/maps)

ABOUT SHARED OWNERSHIP

BUY YOUR SHIREBROOK HOME THROUGH SHARED OWNERSHIP

Your dream home is more affordable than you may think with Shared Ownership. Shared Ownership means you can purchase part of your home and then pay rent on the remaining share. Typically, you can purchase 40-75% of your home, but lower shares are available. What's more, Shared Ownership is flexible, and allows you to increase your level of ownership over time if you choose to.

Whatever your looking for, we have a wide selection of homes perfect for whatever your needs.

Buying through Shared Ownership at this development means you can purchase between 10-75% of your property and pay a subsidised rent on the remaining share you don't own.

HOW IT WORKS

- 1** BUY THE FIRST SHARE IN YOUR NEW HOME.
- 2** PAY RENT ON THE REMAINING SHARE
- 3** BUY MORE SHARES IN YOUR HOME LATER

DID YOU KNOW?

[Shared Ownership offers great flexibility, and you can purchase more of your home through staircasing whenever you are ready too.](#)

[CLICK HERE TO LEARN MORE BY READING OUR SHARED OWNERSHIP GUIDE](#)

SHIREBROOK

DERBYSHIRE

A STUNNING COLLECTION OF TWO, THREE AND FOUR-BEDROOM HOMES AVAILABLE THROUGH SHARED OWNERSHIP.

Introducing Shirebrook, a beautiful new residential development at the heart of Derbyshire, made up of 63 stunning two, three and four-bedroom homes available via Shared Ownership. As one phase in a much wider scheme, Shirebrook represents not just a new destination but the beginning of a new community for the Derbyshire area.



GET TO KNOW SHIREBROOK

DERBYSHIRE

Shirebrook is an exclusive collection of two and three and four-bedroom homes offering new opportunities for first time buyers, downsizers and growing families.

- | | | | |
|---|--|--|---|
|  THE ATKINS
2 Bedroom Home |  THE ATKINS II
2 Bedroom Home |  THE ASHER
3 Bedroom Home |  THE BROOK
3 Bedroom Home |
|  THE COATHAM
3 Bedroom Home |  THE ELMSIE
3 Bedroom Home |  THE EMMETT
3 Bedroom Home |  THE MOUNTFORD
3 Bedroom Home |
|  THE ROBIN
3 Bedroom Home |  THE VALE
3 Bedroom Home |  THE WYATT
3 Bedroom Home |  THE WYATT II
3 Bedroom Home |
|  THE ASLIN
4 Bedroom Home |  THE BURNET
4 Bedroom Home |  THE MACARTHUR
4 Bedroom Home |  THE MYLNE
4 Bedroom Home |





This image is from an imaginary viewpoint within an open space area. Its purpose is to give a feel for the development, not an accurate description of each property. The illustration shows a typical Platform Home Ownership home of this type, but there are, however, variances from site to site. External materials, finishes, landscaping, windows and the position of garages, (where provided) may vary throughout the development. Properties may also be built handed (mirror image). Please ask for further details.

THE BROOK

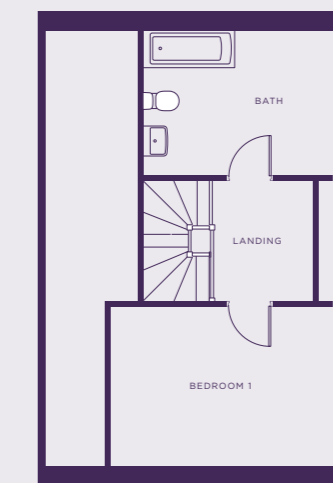
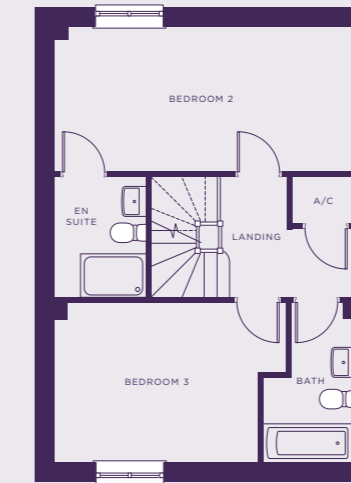
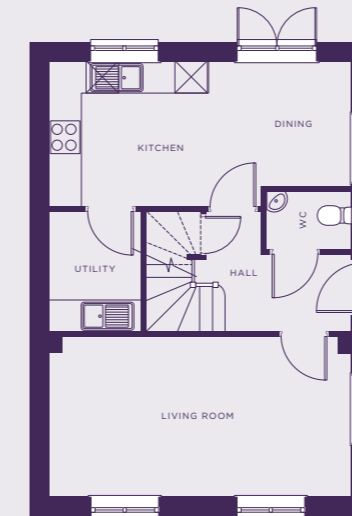
LOTS 240 & 242

TOTAL 1,279 SQ FT

GROUND

FIRST

SECOND



SPECIFICATION

Kitchen

- Modern fitted kitchen
- Stainless steel integral oven, hob & extract hood
- Space for washing machine & fridge/freezer
- Vinyl flooring to kitchen and WC
- Open plan Kitchen/dining

Bathroom

- Family bathroom
- Shower over bath
- Three piece white suite
- Complimentary wall tiling
- Vinyl flooring to bathroom

General

- Located near popular towns including Shirebrook and Mansfield, not far from Nottingham.
- Excellent links to the A60
- 2 parking spaces per property
- 10 Year build warranty

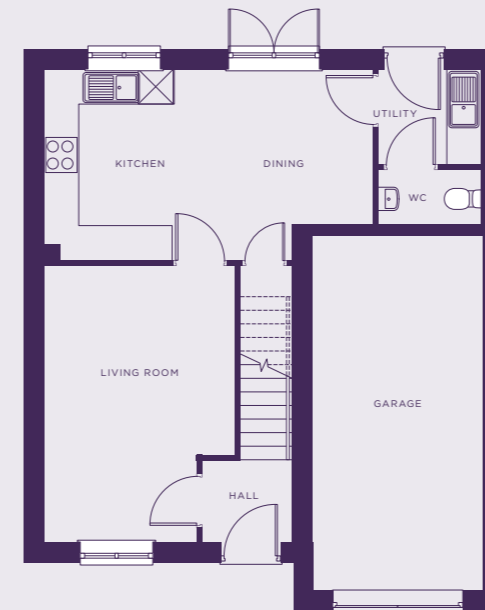


THE COATHAM

PLOTS 187

TOTAL 1,045 SQ FT

GROUND



FIRST



SPECIFICATION

Kitchen

- Modern fitted kitchen
- Stainless steel integral oven, hob & extract hood
- Space for washing machine & fridge/freezer
- Vinyl flooring to kitchen and WC
- Open plan Kitchen/dining

Bathroom

- Family bathroom
- Shower over bath
- Three piece white suite
- Complimentary wall tiling
- Vinyl flooring to bathroom

General

- Located near popular towns including Shirebrook and Mansfield, not far from Nottingham.
- Excellent links to the A60
- 2 parking spaces per property
- 10 Year build warranty

This image is from an imaginary viewpoint within an open space area. Its purpose is to give a feel for the development, not an accurate description of each property. The illustration shows a typical Platform Home Ownership home of this type, but there are, however, variances from site to site. External materials, finishes, landscaping, windows and the position of garages, (where provided) may vary throughout the development. Properties may also be built handed (mirror image). Please ask for further details.

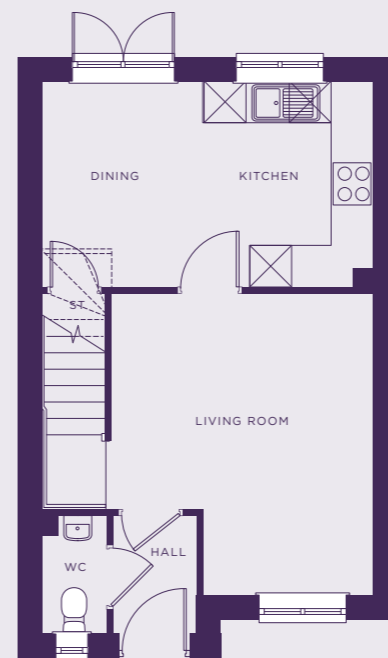


THE EMMETT

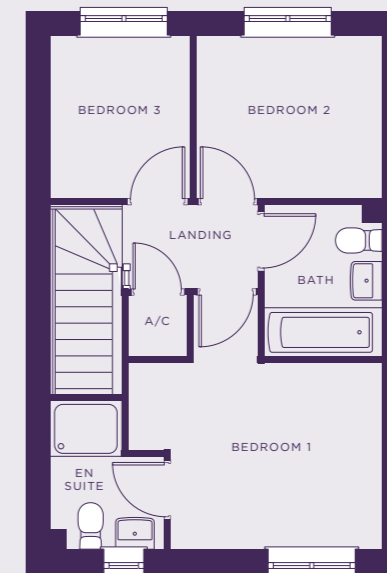
PLOTS 188, 189 & 192

TOTAL 771 SQ FT

GROUND



FIRST



SPECIFICATION

Kitchen

- Modern fitted kitchen
- Stainless steel integral oven, hob & extract hood
- Space for washing machine & fridge/freezer
- Vinyl flooring to kitchen and WC
- Open plan Kitchen/dining

Bathroom

- Family bathroom
- Shower over bath
- Three piece white suite
- Complimentary wall tiling
- Vinyl flooring to bathroom

General

- Located near popular towns including Shirebrook and Mansfield, not far from Nottingham.
- Excellent links to the A60
- 2 parking spaces per property
- 10 Year build warranty

This image is from an imaginary viewpoint within an open space area. Its purpose is to give a feel for the development, not an accurate description of each property. The illustration shows a typical Platform Home Ownership home of this type, but there are, however, variances from site to site. External materials, finishes, landscaping, windows and the position of garages, (where provided) may vary throughout the development. Properties may also be built handed (mirror image). Please ask for further details.



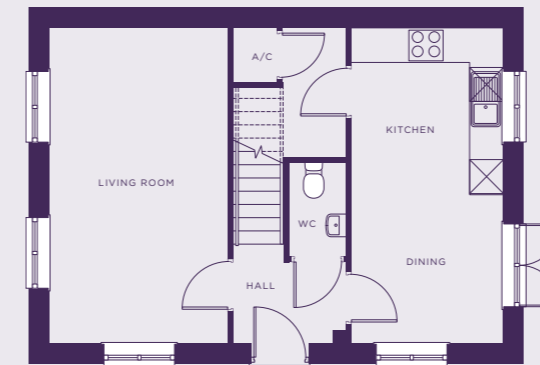
This image is from an imaginary viewpoint within an open space area. Its purpose is to give a feel for the development, not an accurate description of each property. The illustration shows a typical Platform Home Ownership home of this type, but there are, however, variances from site to site. External materials, finishes, landscaping, windows and the position of garages, (where provided) may vary throughout the development. Properties may also be built handed (mirror image). Please ask for further details.

THE MOUNTFORD

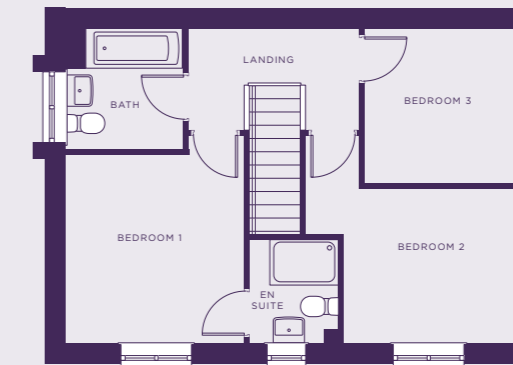
PLOTS 6, 31, 54, 62, 64 & 193

TOTAL 971 SQ FT

GROUND



FIRST



SPECIFICATION

Kitchen

- Modern fitted kitchen
- Stainless steel integral oven, hob & extract hood
- Space for washing machine & fridge/freezer
- Vinyl flooring to kitchen and WC
- Open plan Kitchen/dining

Bathroom

- Family bathroom
- Shower over bath
- Three piece white suite
- Complimentary wall tiling
- Vinyl flooring to bathroom

General

- Located near popular towns including Shirebrook and Mansfield, not far from Nottingham.
- Excellent links to the A60
- 2 parking spaces per property
- 10 Year build warranty



THE WYATT

THE WYATT

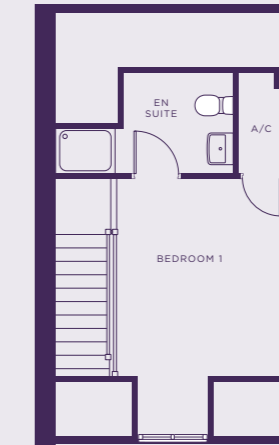
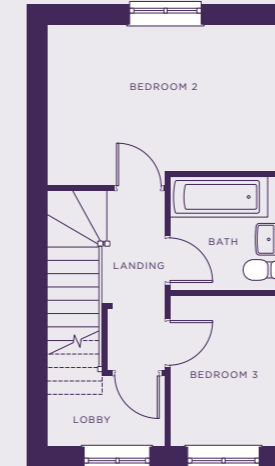
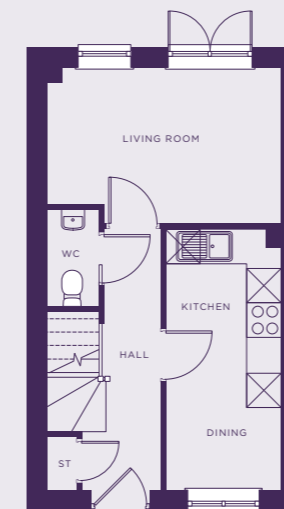
PLOTS 239 & 241

TOTAL 874 SQ FT

GROUND

FIRST

SECOND



SPECIFICATION

Kitchen

- Modern fitted kitchen
- Stainless steel integral oven, hob & extract hood
- Space for washing machine & fridge/freezer
- Vinyl flooring to kitchen and WC
- Open plan Kitchen/dining

Bathroom

- Family bathroom
- Shower over bath
- Three piece white suite
- Complimentary wall tiling
- Vinyl flooring to bathroom

General

- Located near popular towns including Shirebrook and Mansfield, not far from Nottingham.
- Excellent links to the A60
- 2 parking spaces per property
- 10 Year build warranty

This image is from an imaginary viewpoint within an open space area. Its purpose is to give a feel for the development, not an accurate description of each property. The illustration shows a typical Platform Home Ownership home of this type, but there are, however, variances from site to site. External materials, finishes, landscaping, windows and the position of garages, (where provided) may vary throughout the development. Properties may also be built handed (mirror image). Please ask for further details.

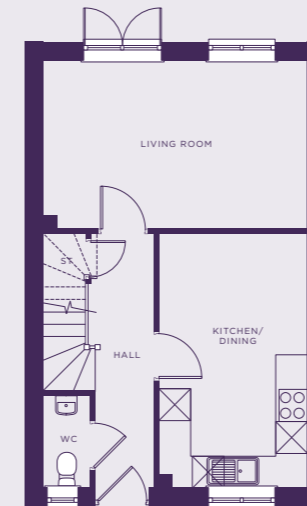


THE ASLIN

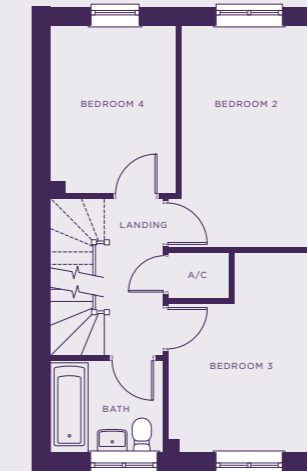
PLOTS 4, 5, 190 & 191

TOTAL 1,113 SQ FT

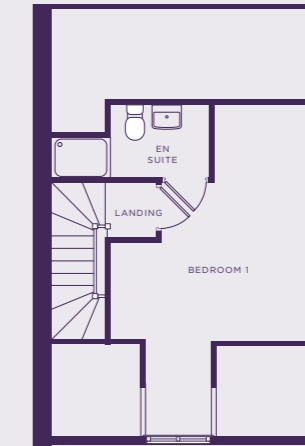
GROUND



FIRST



SECOND



SPECIFICATION

Kitchen

- Modern fitted kitchen
- Stainless steel integral oven, hob & extract hood
- Space for washing machine & fridge/freezer
- Vinyl flooring to kitchen and WC
- Open plan Kitchen/dining

Bathroom

- Family bathroom
- Shower over bath
- Three piece white suite
- Complimentary wall tiling
- Vinyl flooring to bathroom

General

- Located near popular towns including Shirebrook and Mansfield, not far from Nottingham.
- Excellent links to the A60
- 2 parking spaces per property
- 10 Year build warranty

This image is from an imaginary viewpoint within an open space area. Its purpose is to give a feel for the development, not an accurate description of each property. The illustration shows a typical Platform Home Ownership home of this type, but there are, however, variances from site to site. External materials, finishes, landscaping, windows and the position of garages, (where provided) may vary throughout the development. Properties may also be built handed (mirror image). Please ask for further details.



THE MYLNE

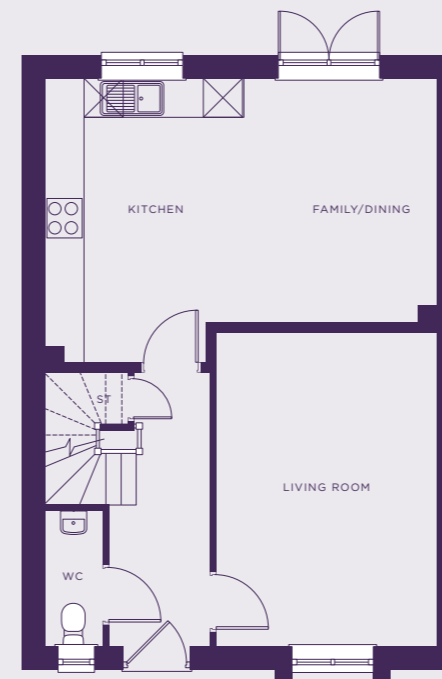
This image is from an imaginary viewpoint within an open space area. Its purpose is to give a feel for the development, not an accurate description of each property. The illustration shows a typical Platform Home Ownership home of this type, but there are, however, variances from site to site. External materials, finishes, landscaping, windows and the position of garages, (where provided) may vary throughout the development. Properties may also be built handed (mirror image). Please ask for further details.

THE MYLNE

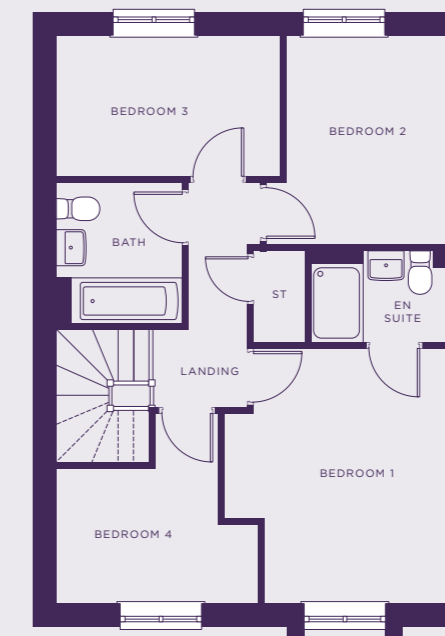
PLOTS 3, 30 & 63

TOTAL 1,142 SQ FT

GROUND



FIRST



SPECIFICATION

Kitchen

- Modern fitted kitchen
- Stainless steel integral oven, hob & extract hood
- Space for washing machine & fridge/freezer
- Vinyl flooring to kitchen and WC
- Open plan Kitchen/dining

Bathroom

- Family bathroom
- Shower over bath
- Three piece white suite
- Complimentary wall tiling
- Vinyl flooring to bathroom

General

- Located near popular towns including Shirebrook and Mansfield, not far from Nottingham.
- Excellent links to the A60
- 2 parking spaces per property
- 10 Year build warranty



SHIREBROOK,
DERBYSHIRE,
NG20



PLATFORMHOMEOWNERSHIP



@PLATFORMHOMEOWNERSHIP



@PLATFORMNEWHOME

GET IN TOUCH

0333 200 7304

sales@platformhg.com

SATNAV

LE16 9PA

Platform Home Ownership have taken every effort to ensure that these documents are accurate and represent the properties available. Platform Home Ownership and the developer may in their efforts to improve design reserve the right to alter site plans, floorplans, elevations and specifications without prior notice. Maps shown are not to scaled and for illustrative purposes only. Distances are taken from [google.co.uk/maps](https://www.google.co.uk/maps). Information is correct at the time it was published - **February 2025**. For more information please visit us website at www.platformhomeownership.com